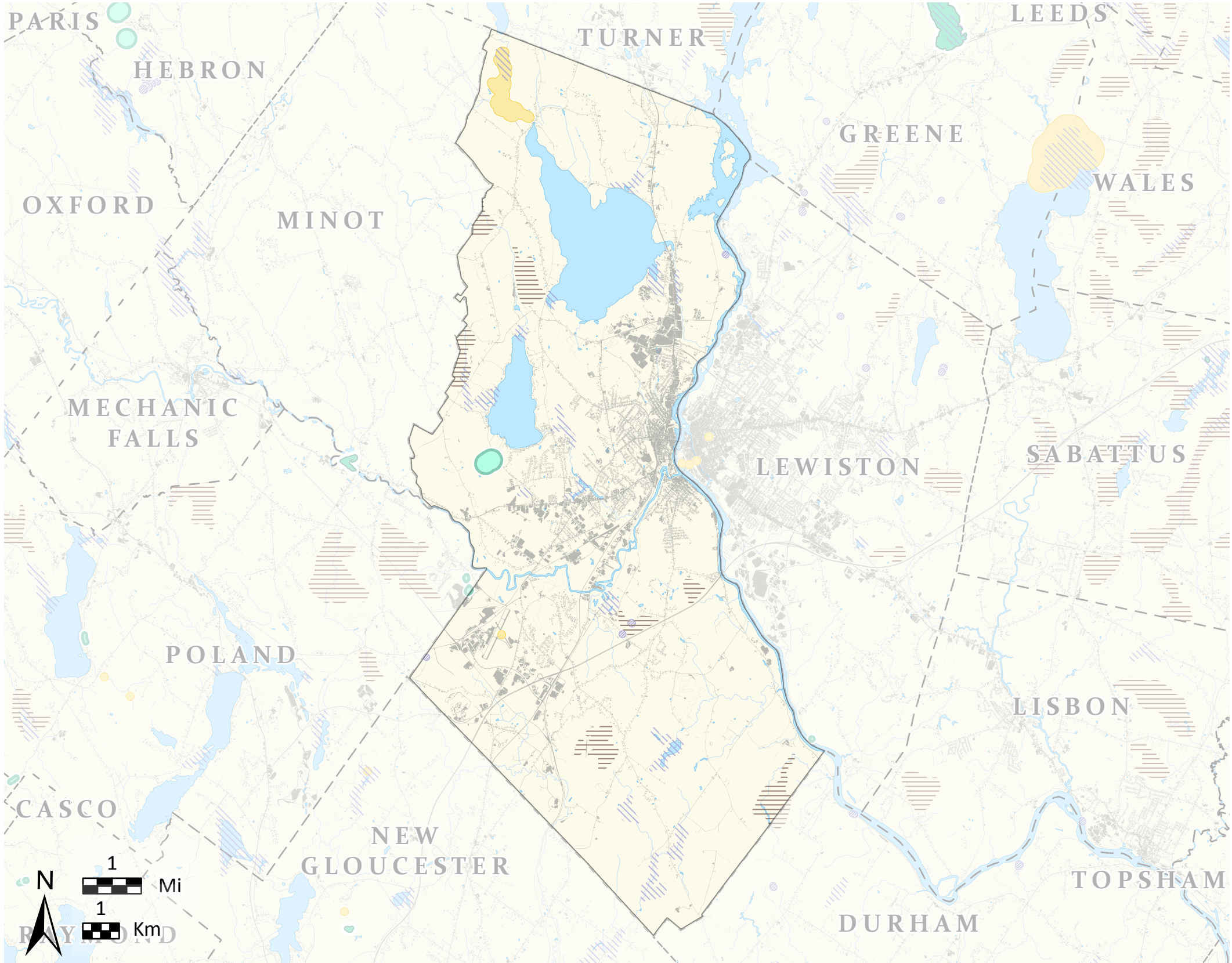


Auburn

High Value Plant and Animal Habitats



This map is nonregulatory and is intended for planning purposes only



Organized Towns

Developed

Impervious surfaces such as roads and buildings.

Rare or Endangered Wildlife*

Endangered,
Threatened, or
Special Concern
Species

Mapped observations of rare wildlife species.

Rare or Exemplary Plants and Natural Communities

Rare Plant
Locations

Known rare, threatened, or endangered plant occurrences are based on field observations.

Rare and
Exemplary Natural
Communities

Mapped features are based on field surveys and aerial photo interpretation.

Significant Wildlife Habitat

Significant
Vernal Pools

Surveyed pool depressions used for breeding by amphibians and other indicator species and that portion of the critical terrestrial habitat within 250 ft of the spring or fall high water mark.

Deer Wintering
Area

Forested area possibly used by deer for shelter during periods of deep snow and cold temperatures.

Inland
Waterfowl and
Wading Bird
Habitats

Breeding, migrating/staging, or wintering areas for inland waterfowl or breeding, feeding, loafing, migrating, or roosting areas for wading birds.

TOWN BOUNDARIES - ME Office of GIS (2021)
HYDROLOGY - U.S. Geological Survey National Hydrography Dataset(2016)
DEVELOPED - NOAA Coastal Change Analysis Program (C-CAP) (2022)

RARE, ESSENTIAL & SIGNIFICANT WILDLIFE HABITATS - ME Office of GIS, ME Dep. of Inland Fisheries & Wildlife (2024)
RARE NATURAL COMMUNITIES & PLANTS - ME Natural Areas Pgm (2024)

Beginning with Habitat (BwH) equips Maine communities, landowners, and conservation partners with tools to protect, restore, and connect important habitats and ecosystems in a changing climate. www.beginningwithhabitat.org

April 2025